

Jennifer Granholm, Governor  
State of Michigan

Gary Heidel, Interim Executive Director  
Michigan State Housing Development Authority

Brian D. Conway, State Historic Preservation Officer  
State Historic Preservation Office

September 2010  
State Historic Preservation Office  
Lansing, Michigan

This report has been financed in part with Federal funds from the National Park Service, U.S. Department of the Interior. However, the contents and opinions do not necessarily reflect the views or policies of the Department of the Interior.

This program receives Federal financial assistance for identification and protection of historic properties. Under Title VI of the Civil Rights Act of 1964 and Section 504 of the Rehabilitation Act of 1973, and the Age Discrimination Act of 1975, as amended, the Department of the Interior prohibits discrimination on the basis of race, color, national origin, or disability or age in its federally assisted programs. If you believe you have been discriminated against in any program, activity, or facility as described above, or you desire further information, please write to:

Office for Equal Opportunity  
National Park Service  
1849 C Street, N.W.  
Washington, D.C. 20240

# **Southwest Michigan RoadMap: The West Michigan Pike**

## **Volume II: Historic Resource Survey**

**Amy L. Arnold  
Preservation Planner  
Michigan State Historic Preservation Office**

*With assistance from*

**Cheryl Chidester  
Diana Clark  
Erin Dorbin  
Sarah Shotwell**

**Special thanks to**

**Sandra Sageser Clark  
Director, Michigan Historical Center  
and  
Beachtowns, Inc.**

**This project was made possible through the  
support of the following organizations**

***Preserve America*, National Park Service, U. S. Department of the Interior  
Berrien County Community Foundation  
Frey Foundation  
Grand Haven Area Community Foundation  
Holland/Zeeland Area Community Foundation  
Michigan Council for the Arts and Cultural Affairs  
Michigan History Foundation  
Michigan Humanities Council  
Fund for Mason County of the Community Foundation for Mason County  
Muskegon County Community Foundation  
Tri-Cities Historical Museum of Grand Haven  
Upton Foundation**

# Contents

---

## Table of Contents

<b>BERRIEN COUNTY</b> .....	1
New Buffalo Township.....	1
New Buffalo .....	10
Union Pier.....	16
Lakeside.....	21
Red Arrow Highway.....	25
Benton Harbor.....	51
Hagar Township.....	63
Mary's City of David.....	65
<b>VAN BUREN COUNTY</b> .....	73
Covert Township.....	73
South Haven Township.....	74
South Haven.....	77
<b>ALLEGAN COUNTY</b> .....	91
Blue Star Highway.....	91
Casco Township.....	91
Glenn.....	94
Ganges Township.....	97
Douglas.....	103
Saugatuck.....	107
Blue Star Highway (cont'd).....	117
Laketown Township.....	118
<b>OTTAWA COUNTY</b> .....	120
Holland.....	120
Grand Haven.....	134
Grand Haven Road.....	141
<b>MUSKEGON COUNTY</b> .....	144
Peck Street.....	144
Hackley Park.....	157
Downtown Muskegon.....	159
Other Historic Resources.....	161
North Muskegon.....	168
Scenic Drive.....	171
Whitehall Road.....	174
White Lake, South Shore Drive.....	176
Whitehall.....	180
Old Channel Trail.....	188
Montague.....	190
<b>OCEANA COUNTY</b> .....	197
Oceana Drive.....	197
New Era.....	198
Shelby.....	203
Hart.....	210
Oceana Drive North of Hart.....	216
Pentwater.....	219
<b>MASON COUNTY</b> .....	235
Pere Marquette Memorial Highway.....	235
Ludington.....	240

## Appendix A - Historic Resource Survey Database

## New Buffalo Township



*Grand Beach Road is part of the original roadbed for the West Michigan Pike (M-11), later known as US 12. This 2007 photo shows the original road alignment on the left. The 1929 realignment of US 12 is to the right of the railroad tracks.*

### **U.S. 12, New Buffalo Township Chicago Road, Sauk Trail**

New Buffalo Township contains a portion of one of Michigan's oldest transportation routes, which connected Detroit to Chicago. Originally known as the Sauk Trail, the road was part of a significant Native American trails system that crossed the state. Michigan's earliest explorers, missionaries, and fur traders continued to use the trail as a central transportation route. In 1824 Father Gabriel Richard urged the United States Congress to appropriate three thousand dollars to survey the trail from Detroit to Chicago. Improvements began in 1829 and were completed in 1835. The trail, which became known as the Chicago Road, was an important transportation route for the

settlement of Lower Michigan, enabling thousands of settlers, mostly from New York and New England, to come to Michigan. In 1911 the West Michigan Pike Association was formed to create a continuous, improved road between Chicago and Mackinaw City. The Chicago Road through New Buffalo Township was included as part of that named highway. After the Michigan Highway Department was established in 1916, the West Michigan Pike was designated M-11, one of the first state trunk lines. A portion of the original routing of the West Michigan Pike still exists between the Indiana state line and Grand Beach and is today known as Grand Beach Road. M-11 was incorporated into the newly established federal highway system in 1927 as part of U.S. 112 and was renamed U.S. 12 in 1962.

On March 31, 1953, the Michigan State Legislature passed Public Act 11 naming U.S. 12 the Pulaski Memorial Highway in honor of the Polish Count Casimir Pulaski who assisted America during the Revolutionary War. Berrien County is one of the few area's where the road is still referred to as the Pulaski Highway. In 1994 U.S. 12 was also designated as the Iron Brigade Memorial Highway in honor of the Twenty-fourth Michigan Infantry Regiment that served in the Civil War.



### **Michiana, New Buffalo Township U.S. 12**

Originally known as Michigan Shores, Michiana was part of a resort development undertaken by the Long Beach Development Company in 1927. The six hundred-acre resort spanned the Indiana-Michigan state line and is known as Long Beach in Indiana. Earliest development was along North Lake Shore Drive. The Great Depression stopped the company's ability to realize its vision for the project and in 1932 Orphie Gotto and Clarence Mathias took it over. The new developers chose to capitalize on Michigan's

rustic contrast to urban Chicago by naming the streets after Native American tribes like Pokagon and Seminole and building small log cabin-style cottages. Over one hundred log cabin cottages can still be found in Michiana. The earliest log cabin cottages can be found along Hiawatha Trail. Bill Jash, a German-Swiss immigrant with experience in log construction, built the best examples found in the development. Michiana incorporated as a village in 1945 to guard against overbuilding. Michiana has always been an unrestricted resort and a number of Jewish families from Chicago purchased cottages there.



## **Grand Beach, New Buffalo Township** Grand Beach Road

In 1900 Floyd Perkins purchased six hundred acres of land on Lake Michigan to create a shooting preserve. Realizing the tourism potential of the beautiful dune land he had purchased—located just ninety minutes from Chicago—Perkins partnered with George Ely to form the Grand Beach Company to turn the land into a cottage resort community. According to the village website, the first twenty cottages the Grand Beach Company erected were catalog homes from Sears, Roebuck and Company. Later, residents built their own homes with

no restrictions placed on the size or type. Grand Beach was an “exclusive” (Gentiles only) community that offered all the modern amenities. Roads were of crushed stone and cottages had running water and indoor toilets. By 1911 forty-eight homes had been constructed and a central lodge was completed. Perkins and Ely also constructed the Grand Beach Country Club as part of the resort, which included an eighteen-hole course designed by noted golf course designer Thomas Bendelow. Landscape architect, Jens Jensen, who served as superintendent of Chicago’s West Parks system and was one of the originators of the Prairie Style of landscape architecture, is credited with landscaping the golf course and subdivision in 1919. The resort was continuously expanded throughout the 1920s with the addition of tennis courts, riding stables, etc. In 1921 the 175-room Golfmore Hotel, one of the grandest resort hotels in Michigan, was completed and the golf course expanded to twenty-seven holes. The Golfmore closed in the 1930s due to the poor economic times brought on by the Depression. It reopened in 1936 with the vision of becoming a high class gambling casino. However, Michigan’s governor stopped gambling operations in the state 1937 and the hotel was unable to recover its former glory before it burned to the ground in 1939. At that time, Perkins offered to sell the golf course to Grand Beach property owners and they collected six thousand dollars to purchase nine holes of the course and donate it to the village of Grand Beach. It is still in operation today.

Grand Beach targeted middle class families whose husbands “cannot afford to give up business for months at a time.” Billing itself as “The only high class lake resort within practical distance for Chicago business men,” its brochure emphasized that it was only a ninety minute ride on the Michigan Central Railroad, which had a depot at Grand Beach (built in 1911 and demolished in 1940), or by automobile from Chicago, which made it possible for businessmen to work all week and join their families on weekends. Richard Daly, Chicago’s longest-serving mayor, owned a summer home in Grand Beach as does his son, Richard Daly Jr., the current mayor of Chicago. Grand Beach was reportedly the vacation resort for many of Chicago’s southside Irish-Catholic immigrants.

Today, Grand Beach retains much of its early resort charm through landscape features such as the entry gate and the white-painted post and cable guard rail that lines the main entry and the retention of many of its small cottages. Historic resources in Grand Beach include:



**19400 Ravine Drive, Grand Beach**  
Grand Beach Inn

Built in 1914 as the Pine Wood Lodge, part of the Grand Beach Resort Development, the hotel is still in operation as a bed and breakfast.



**48200 Perkins Drive, Grand Beach**  
Grand Beach Golf Course

Noted golf course architect Tom Bendelow designed the original nine-hole golf course that was reportedly landscaped by the Prairie Style landscape architect, Jens Jensen. The course was expanded to twenty-seven holes in 1922. Since that time it has been reduced in size, the last reduction occurring in the 1990s when a portion of the course was sold for subdivision development. Today the golf course has been reduced back to the original nine holes. The Mid-Century Modern clubhouse was built in the 1950s.



## Frank Lloyd Wright Homes, Grand Beach

At the turn of the twentieth century, Wisconsin native Frank Lloyd Wright created a new style of distinctly American architecture that was associated with the Midwest and became known as the Prairie Style. Wright had spent a year working in the office of the inspirational Chicago architect Louis Sullivan, whose building designs were based on the philosophy “form follows function.” In 1893 Wright opened his own office, which he eventually moved to Oak Park, Illinois. Wright was known for designing buildings that were visually the antithesis of the multi-dimensional, highly decorated Queen Anne style popular at turn of the century. Instead, Wright’s buildings had clean, horizontal lines; flat or low pitched roofs; and narrow, hidden entrances that opened into rooms defined by walls of windows that filled them with natural light. A group of Chicago architects including George Maher, Thomas Tallmadge, George Elmslie, and Walter Burley Griffin adopted Wright’s approach and became known as the Prairie School of architects. Wright established Taliesin, a school for young architects in Spring Green, Wisconsin, in 1932. Wright’s signature work is *Fallingwater*, a home he built for Sidney Kauffmann outside of Pittsburgh, Pennsylvania. He also experimented with designing affordable homes for the average man. These Usonian homes were typically made of concrete block. Michigan has the largest collection of Usonian homes in the nation.

Frank Lloyd Wright designed three resort cottages in Grand Beach. One, the William S. Carr House at 46039 Lake View, built in 1916, was demolished in 2004. The two remaining are:



**47017 Lake View, Grand Beach**  
Joseph J. Bagley House

Built in 1916 the house was once a series of pavilions linked by open space. The house has been altered over time to provide an indoor corridor between the pavilions



**46028 Crescent Road, Grand Beach**  
Ernest Vosburgh House

Built in 1916, this home exhibits many of the classic characteristics of Wright’s Prairie style and retains much of its original integrity.



**19135 U.S.12, New Buffalo**  
West Michigan Tourist Lodge

On May 4, 1935, the first highway travel information center in the nation was opened along U.S. 12 in New Buffalo by the Michigan State Highway Department. This single-story building in the Colonial Revival style offered travelers modern lounges, picnic tables, benches and information about Michigan travel destinations. During the first seven months of its operation more than thirty thousand visitors utilized the lodge, representing forty-eight states and twelve foreign

nations. The success of the West Michigan Tourist Lodge was closely watched by other states and they followed suit and built their own welcome centers. In Michigan, welcome centers were also built at Menominee and Monroe. On April 6, 1972 the welcome center was relocated to I-94. The West Michigan Tourist Lodge was listed on the Michigan State Register of Historic Places in 1985. It is currently used as a commercial space. A Michigan Historical Marker for this resource was placed at the new welcome center on I-94.

In conjunction with plans for constructing the tourist lodge and to create a scenic entryway into the state, in 1934 the Michigan Highway Department undertook a major landscaping project on U.S. 12 that began at the Indiana state line and ran for three and a half miles to the north. The purpose was to give travelers "a pleasing first impression of Michigan." Over twenty varieties of trees and shrubs were used including hemlock, white birch, dogwood, hawthorn and a variety of pines. The landscape was done in the Prairie style popularized by Jens Jensen and utilized plants that were native to the state, including roses, in order to "present to visitors a typical Michigan landscape rather than an ornate park setting." Breaks in the plantings were planned to provide scenic vistas of Lake Michigan and its sand dunes. Since the train tracks ran parallel to the road, it was acknowledged that train travelers as well as automobile tourists could take advantage of the views.



**18891 U.S. 12, New Buffalo**  
Judy's Motel and Campground

This resource offers a visual example of how tourist accommodations for the automobile traveler evolved between 1920 and 1960. Camping was the first type of accommodation available to the auto tourist and the trailer park behind Judy's motel once served as an auto campground for motorists traveling the West Michigan Pike in the 1920s. The tourist cabin, the first covered shelter commercially provided

to auto tourists, came into popularity in the 1930s. Tourist cabins were small, individual units clustered along a drive. They were frequently built in a romanticized style. The small log cabins on the edge of the Judy's Motel site played up the idea that Michigan was



“wilderness” and enticed city dwellers from Chicago to stop and stay at a cabin in the woods. Tourist cabins were eventually replaced by motels, which were more cost effective to build. Motels were designed to be a series of adjacent rooms all under one roof with a shared heating, lighting, and plumbing infrastructure. The saw-tooth roof of the main building of Judy’s Motel, seen on the right, is a classic example of a simple “mom and pop” motel built before the advent of chain motels. This one was probably built around 1940.



**18373 U.S. 12, New Buffalo**  
Buffalo Motel

When U.S. 12 was improved and the route realigned to the east of the Michigan Central Railroad tracks in the 1930s, traffic on the highway increased considerably. Family-owned mom and pop motels proliferated along the road. After World War II, Michigan State University Extension published brochures that encouraged the establishment of these family businesses by showing them the best way to site and construct motels to attract more tourists.



**19189 U.S. 12, New Buffalo**  
Grand Beach Motel

An example of an early “mom and pop” motel.



**U.S. 12, New Buffalo**  
Pine Grove Cemetery



**910 W. Buffalo (U.S. 12), New Buffalo**  
Paul's Michigan Fruit Market



**718 W. Buffalo (U.S. 12), New Buffalo**  
St. Mary of the Lake Catholic Church

In 1847 German and Irish Catholic immigrants were hired to work on the construction of the Michigan Central Railroad through Berrien County. Many stayed on and settled in New Buffalo. The city's first Catholic church was constructed on Whittier Street in 1857. Saint Mary of the Lake was built in 1936 when the parish consisted of about seventy-five families. The school was opened in 1964.



**105 E. Buffalo, New Buffalo**  
Internet Café

Formerly the Log Cabin Inn, one of a number of Greek-owned restaurants in New Buffalo that catered to a Greek tourist clientele.



**616 W. Buffalo, New Buffalo**  
Redamak's Hamburgers

George and Gladys Redamak established a small concrete block, roadside tavern and hamburger joint at this site in 1946. The Maloney family purchased the business in 1975. Redamak's kitchen was enlarged in 1978, tripling its size. A back dining room was added in 1984 and a third renovation occurred in 1990. A screened porch was recently added. Redamak's still offers the "Working Person's Special," which was developed for the men and women that worked at the New Buffalo train yard.



**530 S. Whittaker, New Buffalo**  
Railroad Museum

This is a replica of the former Pere Marquette Train Depot and serves as a museum.



**530 S. Whittaker, New Buffalo**  
Gold's Gym

The Round House was part of a larger Pere Marquette railroad complex that included two coal towers and water tower. The round house once had sixteen stalls of which only three remain.



**17769 Behner, New Buffalo**  
Greek Annunciation Church

The church purchased the former Golden Door Restaurant and remodeled it in 1994. In 1995 the highly decorated interior of the original church (built at 725 Broadway in Benton Harbor in 1949) was moved to this location. The church contains a permanent exhibit entitled "Greeks of Berrien County." It holds two annual events celebrating Greek Culture including the Greek Festival in July and a Greek dinner in the fall.

## New Buffalo

Captain Wessel Whittaker founded New Buffalo in 1834. According to local history, Wessel's ship was beached south of the city's present location during a storm and he and his crew walked along the Lake Michigan shore toward St Joseph. He was impressed with the harbor and returned to purchase land, plat the village, and build the community's first frame house.

New Buffalo is located on what was known as the Sauk Trail (also known as the Chicago Road and U.S. 12), one of the oldest transportation routes in the state. A stage line connecting Detroit to Chicago began operating on the Chicago Road in 1835 and New Buffalo was a stop. In 1837 pioneers from Virginia that had settled in LaPorte, Indiana, purchased 640 acres of land adjacent to Captain Whittaker's. Unfortunately, the Panic of 1837 stopped their plans to expand the community. In 1838, the U.S. War Department determined that New Buffalo's harbor should be improved and in 1839 a lighthouse was constructed. Further improvements were never funded and by 1843 only two families remained in the village.

George Allen, a farmer from LaPorte, Indiana put up the money to construct an improved road from New Buffalo to Springfield, Illinois. He wanted New Buffalo to serve as a shipping point for grain from western Indiana and Central Illinois. His efforts attracted the Michigan Central Railroad who chose to run its Detroit to Chicago rail line south through New Buffalo where farmland had already been cultivated rather than north through Kalamazoo where the majority of the land was still unsettled wilderness. The Michigan Central Railroad began improvements on the New Buffalo harbor in 1847 and began operating passenger steamers to Chicago across Lake Michigan until its rail line could be completed to the city. By 1849 the rail line was finished and lake passenger service to Chicago from New Buffalo ended. It did not begin again for almost fifty years.

In 1850 a large number of Germans immigrated to New Buffalo Township and by 1906 more than half of the township residents were German. Claus H. Schultz of Holstein, Germany arrived in New Buffalo in 1852. An owner of a successful nursery, he became a local leader constructing a number of buildings in the village and serving as its president.

In 1869 the Chicago and West Michigan Railroad began construction of a north-south rail line that ran along Michigan's West coast. It was completed to Pentwater in the 1870s and to the Petoskey area by 1894. Chicago travelers heading to the Michigan resorts at Bay View, Harbor Springs, and Petoskey would take the Michigan Central from Chicago and disembark at New Buffalo to catch the Chicago and West Michigan Railroad north.

New Buffalo has long served as the commercial center for resort communities such as Grand Beach and Union Pier. The original route of the West Michigan Pike, completed in 1922, followed Whittaker Street, New Buffalo's main street, to Marquette Road north to Union Pier. The founding of the Bohemian Camp Sokol in 1905 just north of town brought a large Czech population to the community. In the 1960s New Buffalo was a popular resort area for Chicago's Lithuanian immigrants.

### Downtown New Buffalo

New Buffalo's historic character results from the number of frame commercial buildings that give it the feel of a small resort town. These frame buildings typically have end gables or false fronts. Few buildings are over two stories with the exception of the yellow brick New Buffalo State Bank building, a distinguishing resource on the city's main street. Casey's Pub has been in business since 1937.



**100 N. Whittaker, New Buffalo**  
The Villager



**110C N. Whittaker, New Buffalo**  
The Cool Pepper  
The Sailor

**122 N. Whittaker, New Buffalo**  
Purple Moon  
Harbor Country News



**122 N. Whittaker, New Buffalo**  
Le Panache

**126 N. Whittaker, New Buffalo**  
South Bend Chocolate Cafe

**128 N. Whittaker, New Buffalo**  
Rosie's Restaurant



**136 N. Whittaker, New Buffalo**  
Casey's Bar & Grill



**10 N. Whittaker, New Buffalo**  
Coldwell Banker

**18 N. Whittaker, New Buffalo**  
George's Styling Shoppe

**20 N. Whittaker, New Buffalo**  
The Flour Shop Bakery & Pizza

**30 N. Whittaker**  
David's Delicatessen



**38 N. Whittaker, New Buffalo**  
Sweetwater Boating Supplies



**19 N. Whittaker, New Buffalo**  
Keller Williams Realty



**45 N. Whittaker, New Buffalo**  
New Buffalo Savings Bank



**107 N. Whittaker, New Buffalo**  
Michigan Thyme





**139 N. Whittaker, New Buffalo**  
Light Harbor Realty



**2 Harbor Isle Drive, New Buffalo**  
South Cove Condominiums

Designed by Chicago-based architect Harry Weese in 1980, the condominiums are accessible directly by boat. Weese was an important Modern architect. Educated at the Massachusetts Institute of Technology, he attended the Cranbrook Academy of Art in Bloomfield Hills, Michigan, in the late 1930s. He joined the Chicago architectural firm of Skidmore, Owings, and Merrill and became an advocate for the preservation of Chicago's landmark buildings. Weese also designed Lake Michigan College in nearby Benton Harbor in 1970.

## Riviera and Marquette Roads, New Buffalo Township

Prior to 1920s, the West Michigan Pike ran along Whittaker Street to Riviera Street, which becomes Marquette Avenue. The following resources are located along this original stretch of the old West Michigan Pike route:



**200 N. Whittaker, New Buffalo**  
Lion's Park



**N. Whittaker, New Buffalo**  
New Buffalo Beach



**11200 Marquette Avenue, New Buffalo**  
Camp Sokol

Founded in 1905 by the Bohemian Club of Chicago, by the 1920s it was the largest Bohemian camp in the nation. The purpose of a Sokol is to keep alive Czech traditions and arts and to encourage physical and mental excellence.



**Marquette Avenue, New Buffalo**  
Sturgeon Beach

Sturgeon Beach is a small resort community established in 1925. The Lakeview Hotel operated here during the 1930s.



## Union Pier

Union Pier was established by John Gowdy, a settler from New York State, in 1861. He set up a sawmill to process timber and constructed a six hundred-foot pier at the site in order to ship the material to Chicago. Union Pier also had a brick factory, and the Chicago fire of 1871 brought a boom to the small town as it supplied the devastated city with rebuilding materials. The Chicago and West Michigan Railroad came to Union Pier in 1869 when tracks were completed between Chicago and Saint Joseph, Michigan. In the late nineteenth century after most of the timber had been cut and the lumber industry began to decline, residents experimented with fruit farming and found strawberries to be profitable crop for the area. However, it was the establishment of a lucrative resort industry that provided continued economic stability for Union Pier.

Isaac Smith established one of the first resorts in the area, which built in 1893. Smith purchased a 165-acre farm on Marquette Road and converted it to a resort with the hope of attracting some of the thousands of visitors traveling to Chicago to attend the World's Columbian Exposition. In 1901 Franklin and Herbert Gowdy, early settlers to the area, platted a resort community called Gowdy's Beach, and by 1906 eight families had built cottages there. Other cottage communities quickly followed including Lake View, Shore Acres, and Streed's Beach. In 1911 Marquette Road between New Buffalo and Union Pier was paved and became part of the route of the West Michigan Pike. As a result, this formerly undeveloped section of the lakeshore was now easily accessible by automobile, and dozens of new resorts were constructed along the Lakeshore Drive between Union Pier and Lakeside.

Union Pier resorts have a long history of ethnic diversity. In the 1920s and 1930s Union Pier was popular with Eastern European immigrants that had settled in the Chicago area, mostly Czechs and Bohemians from the suburbs of Berwyn and Cicero. Anton Cermak, a Bohemian who served as mayor of Chicago from 1931 to 1933 when he was assassinated, owned a summer home in Union Pier. In 1925 Louis Gordon built the Gordon Beach Inn in response to anti-Semitic incidents he encountered when staying at resorts in the area. In the 1930s Jewish families from Chicago began coming to Union Pier in large numbers, a trend that continued throughout the 1950s. As economic conditions improved for immigrants they were able to purchase homes in Chicago's suburbs. Once they moved away from the heat and dirt of the city, there was less need for the Czech and Jewish populations to vacation in Union Pier. In the 1950s and 1960s the population shifted as Lithuanians began coming to Union Pier. Lithuanians had begun immigrating to Chicago in 1918, and the city soon had the largest Lithuanian population in the nation. After World War II, many families made room for relatives that had been displaced by the war, resulting in an influx in Chicago's Lithuanian population. The immigrants found Union Pier to be a healthful, relaxing climate and some purchased stores, businesses, and resorts to cater to their fellow Lithuanians. In the 1960s the changing social climate in America enabled African Americans to rent rooms and cottages at hotels and resorts that had once been open to whites only. As a result, Union Pier saw an influx of African American vacationers from South Chicago. Gordon Beach Inn, once a Jewish resort, became popular with African Americans. The community's popularity among African Americans was demonstrated when Jesse Owens, an African American track star that won four gold medals at the 1936 Olympics, purchased a vacation home in Union Pier in 1969.



## Union Pier Resorts



**16220 Lakeshore, Union Pier**  
Gordon Beach Inn

In the 1920s when anti-Semitism was rampant and segregation was a common practice, Louis Gordon, a Jewish physician from Chicago, purchased a former apple orchard on Lakeshore Drive in order to build a resort for Jewish families. Construction of the inn began in 1925 and expanded it in 1929. In the 1960s it became popular with African Americans.



**16032 Lakeshore Road, Union Pier**  
Paradise Villa

Paradise Villa is a small cottage resort that once served the Jewish community. The cottages are built around a central open space.



**15860 Lakeshore, Union Pier**  
Gintara's

Gintara's was originally the summer home of Paul Gray Hoffman, chairman of the board for Studebaker-Packard Company, who owned it for over thirty years from the 1920s to the 1950s.

Hoffman was also the administrator of the Marshall Plan to rebuild Europe after World War II.

Reportedly Dwight D. Eisenhower was



brought to the Hoffman home when he was asked to run as the Republican presidential candidate in 1952. Many celebrities visited Hoffman at his Union Pier home, including Bob Hope and Bing Crosby. Lithuanian immigrants Algirdas and Viktorija Karaitis, who came to the United States in 1949 as

“displaced persons” after World War II, purchased the Hoffman home in the mid-1950s to create a resort. They constructed cottages on the property and provided traditional Lithuanian meals. A Lithuanian chess master named Tautvaissa vacationed there and would challenge other resorters to matches. The Lithuanian Architects and Engineers Society held their annual meetings at Gintara’s.



**15711 Lakeshore, Union Pier**  
Lakeview Terrace

Once called the Lakeview Hotel, this inn was a popular vacation destination for Lithuanians.



**Lakeshore Drive, Union Pier**  
Cottage Resort



**156757 Lakeshore, Union Pier**  
Fire Fly Resort

Formerly the Nevinga Resort, once popular with Lithuanians, this is a typical cottage resort built around a central open space.



**Lakeshore Drive, Union Pier**  
Cottage Resort

This small cottage resort is a long, single linear perpendicular to the Lake Michigan shore.



**9393 Lakeshore, Union Pier**  
Lat's Cottages on the Lake

This small cottage resort was established in 1958. The signs posted just outside the entry to Lat's are a testament to the area's Czech heritage.



**Lakeshore Drive, Union Pier**  
Cottage Resort





**9708 Berrien Street, Union Pier**  
Inn at Union Pier

Built c. 1920 and originally known as Karonsky's Hotel, this was a Jewish hotel which offered thirty-nine small rooms and served as the only kosher hotel in Union Pier. Jewish resorters visiting the area would often come to the dining hall (now the Great Hall) for meals. The interior of the hotel has been remodeled.



**9517 Union Pier Road, Union Pier**  
Sweethaven Resort & Union Pier School

A former Czech resort known as the Vavra Resort, was built in the 1920s. The one-room Union Pier School was moved to the property in 1928 after school consolidation occurred between Union Pier and New Buffalo. It was converted for use as the resort's store.



**9173 Union Pier Road, Union Pier**  
Centennial Farm

## Lakeside

John, Joseph, and James Wilkinson purchased two thousand five hundred acres on Lake Michigan and built a sawmill and a six hundred-foot pier around which a small village developed. Originally known as Wilkinson, the early name was changed to Lakeside in 1874 when the village incorporated. Lakeside became a popular resort area in the late 1880s. Visitors pitched tent camps on the dunes, but soon cottages were constructed. By the 1890s, Lakeside had a small train depot and had become the resort area for some of Chicago's most notable citizens, especially those associated with social work, academia, and the arts. In 1890 John D. Rockefeller and the American Baptist Education Society had partnered to establish the University of Chicago at Hyde Park. William Rainey Harper, the University's first president, sought some of the nation's most talented educators. Lakeside quickly became the preferred vacation spot for University of Chicago professors, associates, and activists. One of the community's most notable vacationers was Jane Addams, a sociologist and reformer that established Hull House in Chicago and received a Nobel Peace Prize in 1931 for her work with the International League for Peace. Addams rented a cottage in Lakeside throughout the teens and twenties and was the first person to subscribe as a member to the newly formed Chikaming Country Club when it was established in 1910. Addams' Hull House colleagues Edith and Grace Abbott and Sophonisba Breckenridge, also rented cottages in the community. Lakeside was also the summer residence of prominent Chicago-based businessmen such as Harold Swift, of the Swift Packing Company and Louis Rueckheim, the founder of Cracker Jack. Other prominent summer residents include Frank Jenney, son of architect William LeBaron Jenney and Edward K. Warren, local philanthropist and founder of the Warren Featherbone Company in Three Oaks, Michigan.



### Lakeshore Drive, Lakeside

Economy Portable Housing Company  
Roadside Stand

The Economy Portable Housing Company of West Chicago, Illinois, offered a series of distinctive hexagon-shaped buildings for use as farm buildings, tourist cabins, restaurants, garages, and roadside stands. Their brochures noted that their sectional portable buildings were "Not ready cut but ready built. Ready to erect and use immediately at a minimum cost." The roadside stand kit came in three basic sizes: 10' x 12', 12' x 14', and 16' x 18'. On the larger units, the roof was extended by twelve

inches and screen openings were provided on three sides. Extensions could be added to any of their structures. This roadside stand in Lakeside exhibits the characteristics of an Economy Portable Housing Company roadside stand.





## 15251 Lakeshore, Lakeside

Lakeside Inn

The inn began in the late nineteenth century as a resort called Pleasant Grove. In 1901 it was purchased Arthur Aylesworth, an actor and showman who reportedly was part of the Buffalo Bill Wild West show. Aylesworth was married to Grace Garrett, an actress, and their niece, Clara Kimball Young, a popular silent film star who often stayed at the Inn. Aylesworth took over management of the Inn after his father's death in 1917. Lakeside Inn

is located on the original route of the West Michigan Pike and in the 1920s was a popular stop for automobile tourists. The inn offered a restaurant and dancing, a small zoo, and gardens. It reportedly operated as a speakeasy during prohibition that was visited by Chicago gangster, Al Capone. The inn fell on hard times in the 1950s and was purchased in 1968 by John Wilson, an international art print dealer, who established the Lakeside Center for the Arts and operated his print business from the premises. Wilson would invite artists to stay at the inn during the summer and guests included Richard Hunt, Ed Paschke, and Roger Brown. In 1994 the Inn was purchased by Devereux Bowly, a Chicago-based lawyer and writer who restored it to its 1920s grandeur and reopened it as an inn. Today, Lakeside Inn is a showplace of the Arts & Crafts style and the lobby is filled with American Arts & Crafts furniture and pottery.



## Lakeshore Drive, Lakeside

Stanley Tigerman/Margaret McCurry

Summer Home

Chicago-based architects Stanley Tigerman and Margaret McCurry built this summer home in Lakeside.



**14950 Lakeside Road, Lakeside**  
Lovell & Whyte

Stanley Fairclough, a local architect designed a number of Tudor-style buildings in Lakeside.



**14913 Lakeside Road, Lakeside**  
Pomegranate Home



**14921 Lakeside Road, Lakeside**  
Cottage



**Lakeside Road, Lakeside  
Cottage**



**15029 Lakeside Road, Lakeside  
Shakespeare House  
Chikaming Country Club**

In 1911 the residents of the community of Lakeside organized the Chikaming Country Club and leased the former Pine Lake Resort owned by Clarence Wilkinson for their clubhouse. When the club incorporated in 1912, the first membership certificate was issued to Chicago social worker Jane Addams. Addams and some of her colleagues at Hull House were frequent summer residents of Lakeside. In 1914 the Lakeside Golf Club was formed and Harvey

Collis, the golf professional from the Flossmoor Country Club in Flossmoor, Illinois, was hired to design a nine-hole course. In 1918 the Chikaming Country Club and the Lakeside Golf Club merged into the Chikaming Golf Club. The club purchased the Pine Lake Resort land in 1923 and expanded their holdings by purchasing land from E. K. Warren of the Warren Featherbone Company in Three Oaks. An eighteen-hole golf course was laid out and dedicated in 1925. Through the efforts of Lakeside resident O. T. Henkle, vice president and manager of Chicago's Union Stockyards and Transit Company, a clubhouse was obtained. Henkle was able to purchase a replica of Shakespeare's birthplace that had been constructed for the International Livestock Exposition held in Chicago in 1924. The Shakespeare House, as it became known, was dismantled and shipped to Lakeside. Its reconstruction was supervised by Stanley Fairclough, a local architect that designed a number of English Tudor-inspired homes in the Lakeside community.

## Red Arrow Highway – Union Pier

The Red Arrow Highway marks the route of the first major realignment of the West Michigan Pike that took place between 1927 and 1929. The realignment was part of a larger plan to recreate a shoreline highway around the state “to stimulate tourism business.”



**Red Arrow Highway, Union Pier**  
A boat Launch on the Galien River.



**16678 Red Arrow Highway, Union Pier**  
Nadra K Real Estate

The building was originally a gas station that was moved to the site in the 1980s and completely redesigned. Nadra Kissman is the granddaughter of John Wilkinson, the founder of Lakeside.



**16409 Red Arrow Highway, Union Pier**  
Millers Country Place & the Wine Sellers

Originally known as Prusa's Dance Hall and Cabins, it was a popular Czech resort throughout the 1930s and World War II. The main building later became a restaurant, Miller's Country Place (1980-2006) owned by a Chicago television newscaster. The building pictured at the right is a former gas station on the site.





**Red Arrow Highway at Townline Road**  
Former Texaco Gas Station, Union Pier

In 1937 Texaco Oil Company hired a pioneer in industrial design, Walter Dorwin Teague, to create a design for a new standardized service station building. Teague's strikingly simple design, based on the International style, completely changed the way gas stations were constructed and how they were viewed by the public. Teague's Texaco station was a simple box sided in gleaming white porcelain panels. It featured an office area of plate glass and two garage bays. It was stripped of all decoration except for two stripes of green porcelain

enamel at the roofline and a few red stars that mimicked the company's logo. Sometimes an overhang with rounded corners was incorporated. These bright, shining buildings were symbols of safety, cleanliness, and service wherever a motorist traveled. Soon other oil companies adapted Teague's radical new design and it dominated the roadways in post-World War II America until the 1970s.



**9901 Townline Road, Union Pier**  
Milda's Market

This building was a popular Lithuanian Market known as Kalus Royal Blue Grocery in the 1940s. Today, the interior is decorated with photographs depicting Union Pier's Lithuanian heritage. The store still carries Lithuanian pastries.



**9935 Townline Road, Union Pier**  
On the Lounge Studio

Formerly Kopack's Variety Store, 1940-50.



**9805 Union Pier Road, Union Pier**  
G & K Party Store

**9811 Union Pier Road, Union Pier**  
Ramberg's Bakery



**9912 Union Pier Rd, Union Pier**  
Margaret Sullivan Studios



**16090 Red Arrow Highway, Union Pier**  
Pumpnickel  
Inn & Casual  
Café





**Red Arrow Highway, Union Pier**



**16109 Red Arrow Highway, Union Pier**  
McCollum Architects

This former ice cream stand is now the office of architect Bill McCollum, who designed nineteen of the homes in the new Camp Buffalo resort subdivision at 106 Franklin in New Buffalo.



**16143 Red Arrow Highway, Union Pier**  
Formerly the Café Tuscany



**16036 Red Arrow Highway, Union Pier**  
Frankie's Place



**15710 Red Arrow Highway, Union Pier**  
Red Arrow Roadhouse



**15700 Red Arrow Highway, Union Pier**  
Whistle Stop Deli

A former gas station and grocery.





**Red Arrow Highway at Warren Woods Road, Union Pier**  
Garage



**Red Arrow Highway at Warren Woods Road, Union Pier**  
False Front Building c. 1920s



**5506 Red Arrow Highway, Union Pier**  
Warren Woods Inn

## Red Arrow Highway - Lakeside



**Tudor Shelter, Lakeside**  
Lakeside Park



**Red Arrow Highway, Lakeside**  
J. L. Powell Catalog Clothing Business



**14866 Red Arrow Highway, Lakeside**  
Abigail Heche, Jewelry Designer



**14634 Red Arrow Highway, Lakeside**  
White Rabbit Inn

A “mom and pop” motel.



**13982 Red Arrow Highway, Harbert**  
Capozio's Restaurant

An Italian restaurant established in 1949. Glenlord Road to the north was a popular Italian resort area in the 1930s and 1940s.



**Red Arrow Highway, Harbert**



## **13430 Prairie, Harbert** Camp Hazelhurst, Prairie Club

In 1907 the Playground Association of America (PAA) was formed to guide the creation of a national public recreation movement to provide healthy play opportunities for urban children. President Roosevelt served as the group's honorary president and Jane Addams, Chicago's noted social activist, served as the group's vice president. In 1908 the Chicago chapter of the PAA put together a series of Saturday afternoon nature walks in the

environs outside of Chicago. The walks were co-sponsored by sixteen groups including the Illinois Audubon Society, the Geographic Society of Chicago, and the Women's Outdoor Art League. Over 128 people attended the first walk and a tradition that has lasted almost 95 years was born. The group incorporated as the Prairie Club of Chicago in 1911 and landscape architect Jens Jensen, served as its first president. Under Jensen, the Club expanded its offerings from weekend walks in the Chicago vicinity to camping trips in Michigan's Upper Peninsula. They later took trips to western states to see natural wonders like Yellowstone National Park. The Prairie Club of Chicago focused its attention on encouraging the establishment of a state park system for Illinois and were also involved in lobbying for the protection of the Indiana Dunes in northern Indiana

In addition to Jensen, Prairie Club members included some of Chicago's most celebrated citizens: the writer Hamlin Garland; Stephen T. Mather, a Chicago business man that went on to become the first director of the National Park Service; Art Institute of Chicago Director William M. R. French; Henry C. Cowles, a botanist at the University of Chicago; and Lorado Taft, the sculptor who created the Charles Hackley Memorial in Muskegon. Gertrude Simmonds, the daughter of landscape architect O. C. Simmonds often brought the club to Michigan to visit Nichols Arboretum in Ann Arbor, which her father designed; she also owned a summer home in Lakeside, Michigan. Southwest Michigan philanthropist, Edward K. Warren of the Warren Featherbone factory in Three Oaks, Michigan, was also an early member of the Prairie Club. Warren later donated land for the establishment of Warren Dunes State Park and Warren Woods Natural Area in Berrien County. The Prairie Club was a politically influential group that greatly impacted the conservation of natural resources in the Great Lakes area.

In the summer of 1911, the Prairie Club established a summer camp in the Indiana Dunes. The club lobbied the federal government to establish the Indiana Dunes as a National Park in order to protect them from further encroachment by steel plants, such as those in Gary, Indiana. The outbreak of World War I and redirection of funding to the war effort ended that dream and the club turned its attention to designating the site as a state park. The Indiana Dunes State Park was created in 1925, and the next year, the Prairie Club sold its camp at Tremont Beach to the state of Indiana so the land could be incorporated into the state park.

In 1930 the club purchased sixty acres of land in Harbert, Michigan, from William R. Hibbs and established a new camp called Hazelhurst, which it still operates today. The Hibbs home and barn were retained as camp buildings and twenty "cottages" (little more than tents) were moved to the new site from the Tremont Camp. In 1938 a children's clubhouse was built at the Hazelhurst Camp. Today there are ninety-four privately owned cabins in the camp, which operates as a cooperative.



**13609 Red Arrow Highway, Harbert**  
Swedish Bakery

Established in 1901, the bakery served Swedish families associated with the nearby Swedish Lutheran summer camp and resort, Bethany Beach.



**13887 Red Arrow Highway, Harbert**  
Harbert Antique Mall



**13581 Red Arrow Highway, Harbert**  
Café Gulistan

Former site of the Molly Pitcher Winery tasting room, it is now a Mediterranean restaurant established in 1994 by Ibrahim Parlak, a Turkish Kurd.



**Red Arrow Highway, Harbert**  
Harbert Community Park



**Old M-11, Harbert**

Old M-11 is a short piece of the original M-11 trunk line route and contains a c. 1920 rock face concrete block commercial building.



**Red Arrow Highway @ Holloway Road, Sawyer**



**Red Arrow Highway, Sawyer**  
Red Arrow Market

A vernacular Mid-century Modern building constructed around 1960.



**12825 Red Arrow Highway, Sawyer**  
Dunes Antique Center

According to the current owner: "the original building (the center red brick part) was a restaurant and they had small rooms upstairs that were rented to loggers around 1910-1920's. During Prohibition we have been told that the upstairs was a dance hall and that it was possible it was a Dillinger hang out, his chauffeur rented a room above Schlipp's Pharmacy in downtown Sawyer. When the depression hit the building was empty and then WWII

started. During the war there was a factory in the upstairs that made raincoats for the army. After the war the building once again was empty for a while until it became a furniture store in the early 1950's. The furniture store was there for over 40 years, they added the large block addition that is now the main floor and goes all around the building. It has been an antique store since 1996, when I leased it with an option to buy from Herb Klinedinst, the owner of the furniture store."



**12830 Red Arrow Highway, Sawyer**  
Paws & Read

Vernacular Mid-century Modern concrete block building built around 1960.



**5861 Sawyer Road, Sawyer**  
Flynn Theater Building  
Reith Realty & Schlipp's Pharmacy

John Flynn came from Chicago to the village of Sawyer in the 1920s. He opened the Palm Tea Room and the Flynn Soda Grill and built this commercial block, which housed the Flynn Theater. Flynn built a brick home nearby which is rumored to have been frequented by Al Capone.



**12788 Red Arrow Highway, Sawyer**  
Lakeshore Metal Products

Brick commercial building built around 1920.



**Red Arrow Highway, Sawyer**  
Bike Repair Shop

Quonset huts like the building pictured on the left were developed as temporary housing during World War II. After the war they were marketed as inexpensive, easy to construct commercial buildings.





**12620 Red Arrow Highway, Sawyer**  
Smokin' Woody's Drive-In Restaurant



**Red Arrow Highway Sawyer**  
Former U-Pick Blueberry Stand and Plantation



**12312 Red Arrow Highway, Sawyer**  
Franzon Shell Gas Station

This gas station was constructed around 1940.



**12236 Red Arrow Highway, Sawyer**  
Falatic's Meat Market

Falatic's was established in 1975 by Ron Falatic who had served as a butcher at Tittle's, another local market, since 1951.



**12120 Red Arrow Highway, Sawyer**  
Jackson Fruit Stand

The fruit stand has been in this location since the 1960s. It was recently purchased by Joe Jackson who operated a fruit stand in downtown New Buffalo at the corner of Whittaker and U.S. 12 until it was demolished in 2007.



**12032 Red Arrow Highway, Sawyer**  
Warren Dunes State Park

In 1928 the state signed a twenty-five year lease agreement with the E. K. Warren Foundation for over two hundred and fifty acres that contained moving sand dunes and Lake Michigan frontage. The park has been expanded over the years.



**2033 Red Arrow Highway, Sawyer**  
Warren Dunes Motel



**12011 Red Arrow Highway, Sawyer**  
Kamp Across the Dunes



**10975 Red Arrow Highway, Bridgman**  
Captain Mike's Fun Park



**10423 Red Arrow Highway, Bridgman**  
Tabor Hill Tasting Room

The concrete block building was constructed before 1930. The Tabor Hill Winery, which is located in Buchanan, was established in 1968 and has a seventy-acre vineyard. The winery has four tasting rooms; this one specializes in sparkling wines.



**9999 Red Arrow Highway, Bridgman**  
Bridgman Inn

The motel was formerly known as the Lazy V Motel.



**9735 Red Arrow Highway, Bridgman**  
Olympus Restaurant



**9700 Block Red Arrow Highway, Bridgman**  
Commercial block



**9584 Red Arrow Highway, Bridgman**  
Cassidy's Qwik Lube & Car Wash



**9489 Red Arrow Highway, Bridgman**  
Get-A-Way Saloon

This restaurant building displays features associated with a typical "colonial style" diner including a hearth.



**Red Arrow Highway, Bridgman**  
Mid-century Modern vernacular  
commercial building



**9096 Red Arrow Highway, Bridgman**  
Mikey's Drive-In



**8970 Red Arrow Highway, Bridgman**  
Dagostino's Restaurant and Navaho  
Lounge



**6201 Red Arrow Highway, Stevensville**  
Lakeshore Lanes



**6032 Red Arrow Highway, Stevensville**  
Cravings Catering



**5800 Red Arrow Highway, Stevensville**  
Grand Mere Inn

Established around 1960 this restaurant sits atop a bluff and provides views of Lake Michigan from its dining room.



**4277 Red Arrow Highway, Stevensville**  
Ray's Motel



**1113 John Beers Road, Stevensville**  
Railroad Depot



## Red Arrow Highway – Saint Joseph



**Lakeshore Drive, Saint Joseph**  
Resurrection Catholic Cemetery

The cemetery is associated with Saint Joseph Catholic Church, which was established by the Jesuits as a mission over three hundred years ago. The cemetery was established at this location in 1882.



**1605 Lakeshore Drive, Saint Joseph**  
Dairy Korner



**1601 Lakeshore Drive, Saint Joseph**  
Ron Clark Carpet Company

This former gas station was constructed in the late 1930s or early 1940s. It is a vernacular version of the International style gas stations developed by industrial designer Walter Dorwin Teague for Texaco.



**1021 Main Street, Saint Joseph**  
Centennial Wireless

Originally called the J. L. Clark Building it was constructed in 1937.



**1007 Main Street, Saint Joseph**  
Mickey's Pub



**1003 Main Street, Saint Joseph**  
Muday Sewing Center



**Main Street, Saint Joseph**  
Cream brick gas station.



**1127 Main, Saint Joseph**  
Gas station

This gas station is a charming version of a standard design in the English Cottage style adopted by the Pure Oil Company in the 1920s and 1930s. It was meant to harmonize with the adjacent residential district.



**619 Main Street, Saint Joseph**  
Trinity Center (Trinity Lutheran Church)

A Mid-century Modern building built in 1966.



**601 Main Street, Saint Joseph**  
Heritage Museum & Cultural Center

The museum opened at this location in 1997 after the original building burned.



**500 Main Street, Saint Joseph**  
Allegretti Architects Office Building

This is a former Carnegie Library building constructed in 1904.



**510 Main Street, Saint Joseph**  
Saron Swedish Lutheran Church

The church was built in 1882 by a small group of Scandinavian immigrants.



**420 Main Street, Saint Joseph**  
Masonic Temple Building



**509 Ship Street, Saint Joseph**  
Whitcomb Retirement Community

The Whitcomb Hotel was a popular mineral spa established in 1905. In 1927 a group of local businessmen raised over a million dollars to build a showplace hotel and mineral bath that would attract a Chicago clientele. The elegant building was designed by the firm of Pond, Pond, Martin and Lloyd of Chicago. (Allen and Irving Pond were Michigan natives, born and raised in Jackson, Michigan, and were close friends of Jane Addams who frequently vacationed at Lakeside in Berrien County.) The new hotel

had two hundred and twenty-five rooms, a dance floor, an eight hundred-seat dining hall, and a sunken garden. A bathhouse containing sixty tubs was constructed on the site. The hotel closed in 1966 and became a retirement residence in 1973.



**273 Marina, Saint Joseph**  
West Basin Marina

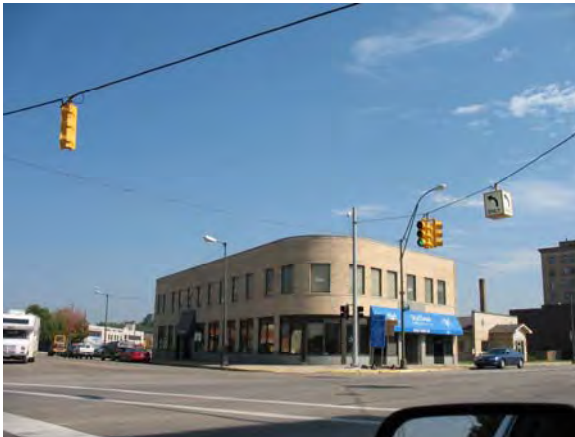


Photo credit: [www.flickr.com/photos/rotfppof/254509521](http://www.flickr.com/photos/rotfppof/254509521)

## **M-63, Saint Joseph Blossomland Bridge**

The Sherzer rolling-lift bascule bridge was designed by the Chicago engineering firm of Hazelet and Erdal. Steel for the bridge, constructed in 1948, was provided by the American Bridge Company and the general contractor was W. J. Meagher and Sons of Bay City. At the time it was built the seven span bridge was the largest ever constructed by the Michigan State Highway Department.

## **Benton Harbor**



## **133 E. Main, Benton Harbor Midtown Family Practice**



## **155 E. Main, Benton Harbor SecurAlarm Systems**



**185 E. Main, Benton Harbor**  
Vincent Place

Built as a luxury tourist hotel, the Hotel Vincent, in 1925 the eight-story building designed by Charles Nicol is the tallest building in Benton Harbor. The hotel closed in 1975.



**213 E. Main, Benton Harbor**  
Expressions Café



**287 E. Main, Benton Harbor**  
Roxy's Drive-In





**90-94 W. Main, Benton Harbor**  
Farmers & Merchants Bank Building

Originally built in 1888, the building was revitalized with a Classical Revival style terra cotta façade around 1915 after a fire.



**95 W. Main, Benton Harbor**  
Abonmarche



**215 W. Main, Benton Harbor**  
Kitchen Mart





**229 W. Main, Benton Harbor**  
Sign Shop



**325 W. Main, Benton Harbor**  
Harbortown Cafe



**384 W. Main, Benton Harbor**  
Kirsh Carton



**408 W. Main, Benton Harbor**  
Villa Environmental Consultants



**424 W. Main, Benton Harbor**  
Certified Metal Finishing



**440 W. Main, Benton Harbor**  
Lark & Sons Barb-B-Q

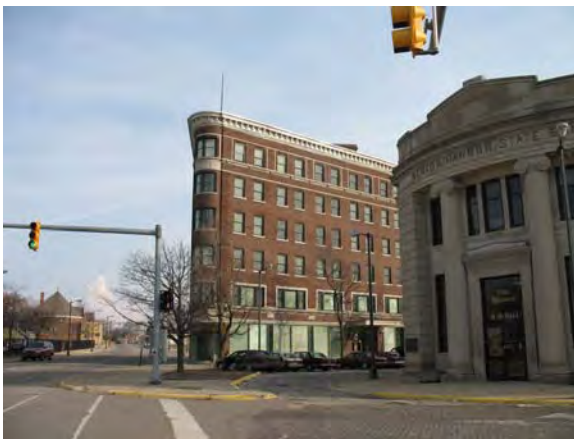


**640 W. Main, Benton Harbor**  
LeValley Used Car Center



**Mary's Fireproof Hotel, Benton Harbor**

Built in 1922 by Benjamin Purnell and the House of David as part of their growing resort industry, which included an amusement park, campground, ball park, and mineral springs. The two hundred thousand dollar fireproof hotel was designed and built by engineers of the House of David. The cast concrete included hematite in the aggregate so that it sparkles in sunlight. When a schism occurred in the House of David after Purnell's death in 1930, the hotel became the property of the faction that followed his wife, Mary.



**162 Pipestone, Benton Harbor**  
Fidelity Building

Built in 1926 and known as the Flatiron Building, the building represented a new era of economic growth in the city. It was designed by Charles Nicol of Nicol, Scholer, & Hoffman a Chicago-based architectural firm. After the building was completed on "Five Points" where Wall, Michigan, Pipestone and Elm Streets converged., the city's business center shifted to that location. Early tenants included the Fidelity Health & Accident Insurance Company. The Fidelity Drug Store operated on the ground floor from

1927-1962. The property is listed on the National Register of Historic Places and was restored using federal preservation tax credits.



**38 W. Wall Street, Benton Harbor**  
The Alliance

Originally constructed as the Benton Harbor State Bank Building.



**161 Pipestone, Benton Harbor**  
Joe's Barber and Beauty Shop

Built in 1928, as the Gray-Hall/Gas Building, the Tudor Revival building was designed by Charles W. Nicol of Nicol, Scholer & Hoffman in Chicago.



**232 Michigan, Benton Harbor**  
Salvation Army



**Water Street, Benton Harbor**  
Hinckley Block

Today this area is known as Benton Harbor's Arts District.



**210 Water Street, Benton Harbor**  
State Theater

The State Theater was built by the Michigan-based W. S. Butterfield theater chain in 1942 and operated until 1960.



**Don F. Mitchell Building, Benton Harbor**



**190 Fifth Street, Benton Harbor**  
The Livery



**212 Territorial, Benton Harbor**  
Ideal Place

Originally called the Stock Building.



**501 Territorial Road, Benton Harbor**  
Morton House Museum

The Eleazer Morton family arrived in Saint Joseph in 1835 and purchased five hundred acres of land in Benton Harbor in the late 1840s. Their son Stanley established the Graham and Morton Steamship Company, the second largest steamship service company on Lake Michigan. The original home was built in 1849 and the front porch and other improvements were made in 1912.



**Territorial Road, Benton Harbor**  
Morton Hill Cemetery

This early cemetery contains the graves of some of Benton Harbor's most prominent pioneer families.



**Goodyear Building, Benton Harbor**



**Parks Building, Benton Harbor**



**Saranac Building, Benton Harbor**



**Gas Station, Benton Harbor**

This 1960s-era gas station is typical of the style used by the Phillips 66 Company.



**1542 Colfax Street, Benton Harbor**  
Jewell Electric

Stone above the door reads "NMTZ."





**522 Columbus, Benton Harbor**  
Eleanor Club

The Eleanor Club was established in 1919 thanks to a generous donation by local lawyer and philanthropist H. S. Gray and his wife Eleanor. The club offered a safe living environment for single women who came to Benton Harbor seeking employment in the industrializing city. In 1928 when this clubhouse was constructed, a room could be rented for three dollars and fifty cents a week.



**472 Cass Street, Benton Harbor**  
Bobo Brazil Community Center

Michigan Boxing Center



**275 Pipestone, Benton Harbor**  
Peace Temple United Methodist Church



**1832 M-139, Benton Harbor**  
Henry's Hamburgers

## Hagar Township

Pier Road in Hagar Township became an established resort area around the turn of the twentieth century. Philanthropist E. K. Warren established a summer camp, Camp Warren, for children at the corner of Maple and Pier Road. In 1915 W. B. Pratt, who had operated a fruit farm in the area since the 1860s, subdivided the land and opened a resort called Pratt's Lakeview Park. The area was frequented by Irish Catholic resorters from Chicago and Chicago's Mayor Richard Daley Sr. reportedly vacationed on Pier Road before building a home at Grand Beach. The Pottawatomie Resort was built in the 1920s to take advantage of automobile travelers on the West Michigan Pike.



**Pier Road, Hagar Township**  
Pottawatomie Resort





**Pier Road, Hagar Township**  
Motel



**6125 Ontario Street, Coloma**  
Sand Castle Cottages of Lake Michigan  
Beach

These cottages are part of a larger resort area known as Lake Michigan Beach.



**Lake Michigan Beach, Coloma**  
Cottage

## Mary's City of David, Benton Harbor

In 1902 Mary and Benjamin Purnell founded a religious community called the Israelite House of David. In 1903 they settled in Benton Harbor, Michigan, and became a force in the area's economy. The House of David developed Eastman Springs into a park and bottled and sold the spring water under the Silver Queen brand for its beauty and medicinal purposes. They built an amusement park with a miniature train ride that became one of the most popular tourist attractions in the area. The House of David sponsored a jazz band and a barnstorming baseball team, known for their long hair and beards that played exhibition games across the country. The House of David was a shareholder in the Benton Harbor street railway, owned some of the best and most prosperous fruit farms in Berrien County and sold their produce at the Benton Harbor Fruit Market, and owned and operated a floral shop and greenhouse. They also operated a tourist court and campground and built a hotel in the center of downtown Benton Harbor. Hematite chips were added to the concrete walls of the hotel so that it sparkles in sunshine. Members were talented and creative people and were credited with inventing the automatic bowling pin setter, for which the patent was later purchased by the Brunswick Company. They are also credited with creating the sugar waffle cone for ice cream. A schism occurred in the church in 1930 after Benjamin Purnell's death, which led Mary to purchase land adjacent to the original site and start a new organization, Mary's City of David. Mary's opened a vegetarian restaurant that became popular with a Jewish clientele from Chicago. Resort cottages soon followed, and from 1930 to 1965 Jewish resorters frequented the area. In appreciation, Mary's City of David built a small synagogue on site for their use. In 1938 a small hospital opened on the site, which showcased some of the country's top surgeons—mostly based in Chicago—but monetary infighting quickly forced its closure a year later.



**Entry Sign**



**Fruit Stand**



**Administration/Dormitory Building**



**Mary's Tomb**



**Mary's Garden**





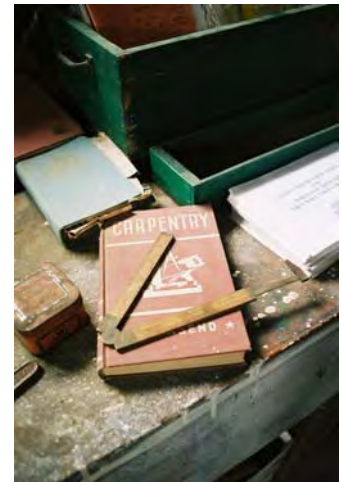
## Laundry Building

The upper floors served as a dormitory. The lower east corner of the building housed the colony's printing press.



## Carpentry Shop

The City of David residents were frugal and inventive. Many of their original tools are still on display.



## Cannery

The colony canned fruit and vegetables that it grew on its own farms. The canned goods were used to feed members and were served in the popular vegetarian restaurant.





**Gift Shop**



**Auditorium**

The building currently serves as a museum.



**Restaurant**

Mary's City of David served vegetarian meals in their popular restaurant and in the 1934 produced a vegetarian cookbook. The restaurant attracted Jewish visitors that ate kosher and this led to the construction of tourist cabins on the grounds that housed Jewish vacationers.



**Mary's House**



**Garage**



**Rabbi's House**





## Gate of Prayer Synagogue

The synagogue was built in 1938 as a thank you to the Jewish tourists who stayed in the tourist cabins the colony built. The income from the resort helped Mary's City of David to thrive after breaking with the House of David.



## Eastman Springs

Eastman Springs was developed as a health resort and spa in the nineteenth century before the House of David settled the adjacent land. It included a hotel, restaurant and gardens. The site includes twenty-seven independent springs. After the House of David Amusement park opened, the resorts popularity waned. Mary's City of David purchased the property in 1943 and marketed the spring water under the Silver Queen and Silver King brands.



## Baseball Park

The baseball park was originally part of the Eastman Spring resort and was used by area schools. It was not used by the famed House of David baseball team. Mary's City of David purchased the property in 1943. It was restored in the 1990s and vintage baseball is played there.

The log cabins were the first resort cabins built on the site. The frame cabins followed shortly after.





**1019 E. Empire, Benton Harbor**  
House of David Trailer Park

## Covert Township



**6410 M-63, Covert Township**  
DiMaggio's Pizza

This Italian restaurant was established in 1957.



**6402 M-63, Covert Township**  
Vitale's Market and Italian Deli



**Thunder Mountain, Covert Township**  
Blue Star Highway

Thunder Mountain is a sand dune formation that reaches six hundred and ninety-nine feet. A small resort was constructed at the base of the dune in the 1920s. The resort includes a semi-circular drive with stone cabins and a stone office/gas station building. The Thunder Mountain area has been part of a dunes

protection effort since sand mining companies began to decimate nearby dunes in the 1950s and 1960s.





## **Covert Township Park, Covert Township** Blue Star Highway

In 1924 the C. J. Monroe and Sons Real Estate Company made a deal with Covert Township officials. If the township would construct a road to Lake Michigan within a one-year period to provide lake access for a resort subdivision the Monroe Company planned to build, the company would donate land for a park.

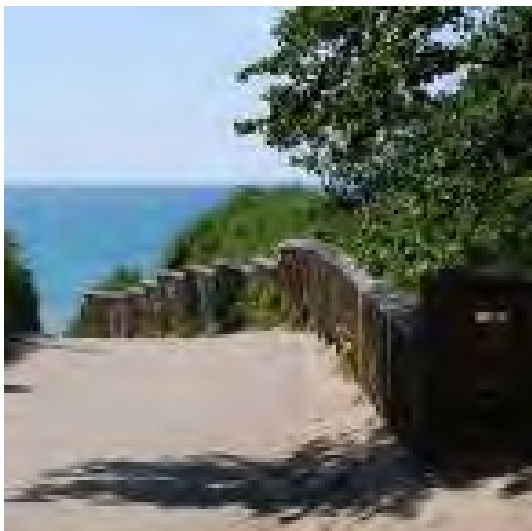


## **Palisades Park, Covert Township** Blue Star Highway

Established in 1893 by Arthur C. Quick the Palisades Park cottage resort community is located on two hundred and fifty acres on Lake Michigan. The nationally significant golf course designer, Thomas Bendelow, once designed a golf course for the community. The course no longer exists, but the Bendelow family still owns a home there.

**Linden Hills**, another private resort association established in the late nineteenth century, is located just south of Palisades Park.

## **South Haven Township**



## **23960 Ruggles Road, South Haven Township** Van Buren State Park

Established in 1923, the park originally consisted of ninety acres. South Haven Township graded the road to the park and improved a series of old logging trails to create a park road system. Stoves, wells, toilets and picnic tables were built. In 1927 a group camp was completed, one of eight group camps built in the state that year—the first time this type of facility had been built in Michigan. No major improvements were made to the park in the 1930s



**9814 M-140**  
Great Lakes Inn

This mom and pop motel is in a classic 1960s Mid-Century modern style.



**M-140**  
Gas Station

This gas station displays 1960s Mid-century Modern features.



**1063 Chambers**  
Chuck's Café



**8510 M 140**  
1950s Drive-in Restaurant



**13967 M-140**  
Ma's Coffee Pot

Arthur Valentine founded the Valentine Lunch System in the 1920s in Wichita, Kansas. By the 1930s Valentine operated thirty diners himself and offered his pre-fabricated buildings for sale to other potential diner operators. While World War II temporarily halted production of the diners, Valentine

began manufacturing them again in 1947. Ma's Coffee Pot is a Double Deluxe Model 2449 Valentine Diner from the 1960s. Valentine diners have two distinguishing characteristics: a wall safe located inside the door featuring a heart with an arrow through it and in diners built after 1950 a serial plate with the Valentine name.



## South Haven



**249 Broadway, South Haven**  
First Hebrew Congregation of South Haven

In 1921 South Haven's Jewish community constructed the Jewish Farmer's Synagogue and Community Center on Phoenix Road (demolished) to provide a place of worship for South Haven's Jewish residents and their resort guests. In 1929 this larger, Mission style facility on Broadway was constructed in town. It was designed by the architect C. C. Elwood of Elkhart, Indiana.



**259 Broadway, South Haven**  
Vineyard Italian Restaurant



**Broadway, South Haven**  
High School Building





**336 Broadway, South Haven**  
U.S. Post Office

The post office was constructed in 1932.



**555 Dyckman, South Haven**  
The Depot

This building was built in 1910 by the Michigan Central Railroad after the original depot burned.



**162 Dunkley**  
Caboose Inn



**Dyckman, South Haven**  
Gas Station Building



**978 Dyckman, South Haven**  
Captain Lou's Cantina



**Dyckman Avenue over the Black River,  
South Haven**  
Bascule Bridge

This bascule bridge was built in 1967.



**Dyckman Avenue at the Black River,  
South Haven**  
Jenner's



**Dyckman Avenue on the Black River,  
South Haven**  
Marinas



**532 Dyckman, South Haven**

Site of a resort known as the Colonial which  
burned and was rebuilt



**206 Dyckman Avenue, South Haven**  
South Haven Maritime Museum

This is a replica of a U.S. Coastguard life saving station.



**203 Dyckman, South Haven**  
The Sand Castle Inn B&B

Originally known as the Shamrock Resort, it was originally a gentile resort that began taking Jewish patrons in the 1930s. The resort was also known as the Grand Park Hotel.



**Dyckman Avenue and Main, South Haven**  
Stanley Johnston Park

Originally known as Oakland Park, it was renamed in honor of Stanley Johnston who worked with the South Haven Agricultural Extension and was instrumental in the establishment of the local blueberry industry. The War Memorial in the park was dedicated in 1924.



**140 North Shore Drive South, South Haven**

Yelton Manor and the Manor Guest House B & B

The Yelton Manor building was constructed in the 1970s. The Manor Guest House was constructed in 1993. They are built on the site of a Jewish resort called the Dewey.



**64 North Shore Drive South, South Haven**

Oakland North and South

Currently a duplex used as a vacation rental home, this was once a Jewish resort known as the Oakland Hotel from 1920 to 1950. Operated by David Mendelson, it was popular with vacationers from Chicago, Detroit, Cincinnati, and Saint Louis. It was converted to apartments in 1970.



**56 North Shore Drive South, South Haven**

Arundel House

This property was built as a resort known as the Marsland in 1899. In 1905 it was sold and renamed the Kenilworth and in 1920 it became a Jewish resort known as Steuben's Summer Resort. It was a rental cottage in 2005.



**42 North Shore Drive South, South Haven**  
Fish Tale Restaurant

In the 1920s the old Marsland Resort was purchased by a Jewish family who began catering to a Jewish clientele under the name the Wayland Resort. Maurice and Annabel Steuben purchased and improved the resort and renamed it the Biltmore around 1940. The castle-like main resort building was demolished in 1971. This remaining building served as an auxiliary structure.



**51 North Shore Drive South, South Haven**  
North Beach Inn

Originally built in the 1880s as the summer home of Jay Baxter Upham, the home was purchased by Annette Rosenberg in 1920 and converted into a Jewish resorted called the Annette. The name was changed in 1925 to the White Lodge. A popular local pizza restaurant, Pigozzi's, operates as part of the inn.



**86 North Shore Drive South**  
The Last Resort Bed & Breakfast

This resort was known as the Saint Cloud Resort in 1900 and the Plaza Resort from 1923 to 1950.



## Monroe Park Neighborhood, South Haven

### Beach Cottage

Much of the property in the Monroe Park resort association was at one time owned by J. T. M. Johnston and L. S. Parker of Saint Louis, Missouri. Parker became a mural painter later in his life and painted murals for a number of Saint Louis' largest and finest banks.



## 118 Woodman, South Haven

### Carriage House Bed & Breakfast

This was the residence of Henry and Ellen Avery who are credited with establishing South Haven's resort industry around 1883. It later became the Lam Wah Inn in the 1920s and the Ambassador Hotel in 1947.



## 27 Oak Street, South Haven

### Victoria Resort Bed & Breakfast

Albert and Anna Glassman established this resort in 1924. Known as Glassman's, it was one of the few certified kosher resorts in the area. It was later known as the Riverview Park Resort.





**1601 North Shore Drive North, South Haven**

Sleepy Hollow Resort Condominiums & Cottages

This cottage resort was built by Edward Gray in 1937 on the site of Sleepy Hollow, an 1880 resort hotel that burned. The Art Moderne style of the cottages was influenced by the Chicago World's Fair of 1933. The complex consisted of a rooming house called "The Big House" and thirteen cottage buildings that contained single, duplex and four units. Gray built a speaker

tower in the center of the resort and broadcast classical music. One of the first guests at Sleepy Hollow was singer/comedian Martha Raye and her husband, bandleader David Rose. Author Studs Terkel spent time here while writing some of his books. A barn (demolished) was converted to a theater in 1962 and performers affiliated with Chicago's Old Town School of Music would perform there.



**79 North Shore Drive North, South Haven**

A Country Place



**7421 Baseline, South Haven**

Built in the 1920s, it was operated as the Highland Resort by the Krechevsky family until the 1960s.





## 7369 Baseline, South Haven

Formerly known as Baron's Resort, it operated from 1920 to 1960.



## Water Street, South Haven

South Haven Pier Light

The South Haven navigation structures were first constructed in 1867 when a sandbar was removed and a channel dredged to enable access by large ships. The structures consist of two piers and the pier head lighthouse that was erected on the south pier in 1913. In the 1930s the steel and timber structures were capped in concrete. They were listed in the National Register of Historic Places in 1993.



## 512 Phoenix, South Haven

MacDonald Pharmacy



**600 Phoenix, South Haven**

South Haven Council for the Arts

Originally the South Haven Library, the Neo-Classical style building was constructed in 1906.



**652 Phoenix, South Haven**

Scott Club

Organized in 1883 as a women's reading group, the Scott Club was so named because the works of Sir Walter Scott were a favorite of its members. The building was constructed in 1892 and designed by John Cornelius Randall. In 1982, the Scott Club was designated as a Michigan historical site.



**1601 Phoenix, South Haven**

Sherman's Dairy Bar

Sherman's Dairy was established in 1916. A grandson of the original owner began making ice cream in the 1950s.



**201 Center, South Haven**  
Hotel Nichols

The hotel was constructed around 1906.



**210 Center, South Haven**  
Michigan Theater



**257 Center, South Haven**  
Hale's Department Store

Hale's Department store was founded in 1855 by Marshall Hale and is still run by the Hale family.



**267 Center, South Haven**  
Barber Shop



**321 Center, South Haven**  
Masonic Temple



**355 Center, South Haven**  
Church



**68299 County Road 388, South Haven**  
Camp Agudah Midwest

This was the site of Fidelman's Resort one of the largest and most well known of South Haven's Jewish resorts. It was sold in 1985 and the majority of the property is now used as an Orthodox Jewish summer camp. One parcel operates as Fidelman's Fun Park, a miniature golf course.



**903 Bailey, South Haven**  
Liberty Hyde Bailey Jr. Home

Liberty Hyde Bailey came to South Haven in 1842. An accomplished farmer, he was known for the quality of his apple orchards. His son, Liberty Hyde Bailey Jr. attended and taught at the Michigan Agricultural College and later became Dean of the Horticulture College at Cornell University. Bailey Jr. was appointed by President Theodore Roosevelt as the head of a commission to find ways to improve America's

rural life in order to keep young people on farms at a time when jobs in industry were drawing them away. Bailey served as editor of two popular magazines that did much to change the attitudes about rural life, *American Garden* and *Country Life in America*. He was also the author of numerous books on gardening. Bailey was responsible for the establishment of the agricultural extension system that still benefits farmers across America.

## Blue Star Highway

### Casco Township



**Between Wilson and Wells Streets,  
South Haven**  
Hebrew Cemetery



**Blue Star Highway, South Haven**  
Tourist Cabins, South Haven



**176 Blue Star Highway, South Haven**  
Sea Wolf Restaurant

The building in which this restaurant is located was once known as Weinstein's, a popular Jewish resort established in 1929.



**473 Blue Star Highway, South Haven**  
Martha's Vineyard Bed & Breakfast



**Blue Star Highway, Casco Township**  
Sunset Shores Resort Subdivision

Beyond the store and entry posts, very little development actually ever occurred within the subdivision.



**Blue Star Highway, Casco Township**  
Workmen's Circle Mt. Pleasant Subdivision

The Mt. Pleasant subdivision was a summer resort built in 1924 for the parents of the children staying at a nearby Jewish summer camp, Camp Kinderland, which is no longer in operation.





**Blue Star Highway, Casco Township**  
Miami Park

In 1927 a Chicgao develper hoped to create a resort subdivision of "Italian" and "Spanish" architecture in West Michigan. Plans included developing an airfield and offering commuter plane service between South Haven and Chicago. The Great Depression interrupted development and only a handful of homes were ever built.



**7097 Orchard Lake Drive, South Haven**  
Glen Shores Golf Club

The golf course was constructed in 1927 as part of the adjacent Glenn Shores resort subdivision. The clubhouse was converted from a barn that already existed on the site. Development of the Glenn



Shores Subdivision was halted due to the Great Depression. A community building that had been built adjacent to the golf course was later moved within the subdivision to the Lake Michigan shore and converted to a private residence.



**1248 Blue Star Highway, South Haven**  
Seymour House & Breakfast

The house was built by William H. Seymour who came to the area from Ohio in 1861 and made his fortune in the lumber industry. He also operated a successful peach orchard. The brick Italianate home was built in 1862. The property was once a commercial peony farm.





**1607 Blue Star Highway, South Haven**  
Helen's Antiques



**Blue Star Highway, South Haven**  
Radseck's Farm Market and Nursery

Max and Helen Radseck opened a farm market in 1923 and it is still operated by the Radseck family. The market operates partially on the honor system—a jar is provided to receive payment for small purchases.

## Glenn

The Glenn area was first settled in 1843 by Arba Crawford of New York who claimed four hundred acres in the township. Other settlers soon followed and in 1860 a pier was constructed on Lake Michigan. William Packard established a successful lumber business in 1859. The community boomed when they provided lumber to the city of Chicago after the 1871 fire. Glenn also profited from the West Michigan peach boom that established the region's reputation as the Fruit Belt in the 1870s. According to Jeanne Hallgren's history of Glenn, *Piers, Pancakes and People*, resorts first opened in the area around 1898. They were successful because of the Glenn Pier, which enabled passenger steamers to stop at the community. The Leland Hotel was built in downtown Glenn and the Dornan Hotel opened there in 1915. Excursion boats would carry passengers from the Glenn resorts to the attractions at Saugatuck and to the Lake Macatawa resorts in Holland. The Protestant Episcopal Church of Chicago built a resort for girls called Holiday House in 1904 resulting in a number of Episcopalians building summer homes in the area. Dozens of summer resorts sprang up in the Glenn area between 1900 and 1930 including the Evergreen Farm Resort, Berry's Resort, and the Glen Beach Resort. According to Hallgren, automobile travel helped bring prosperity to Glenn "They saw the West Michigan Pike, later M-11, come into heavy use in 1921. The road turned east at Glenn, causing traffic to slow down a little and look the place over." Glenn gained national attention in 1937 when a severe blizzard closed U.S. 31 for three days stranding two hundred motorists. Local business owners provided shelter and made pancakes to feed them and the Glenn Pancake Festival was born.



**114<sup>th</sup> Street, Glenn**  
Erby Carriage & Wagon Company

**3988 114<sup>th</sup> Street, Glenn**  
Gertsner Hardware

The store building was originally built by George Clapp. The IOOF Hall was located on the second floor. Georgia Gertsner established the hardware business in 1946.



**6999 114<sup>th</sup> Street, Glenn**  
The Glenn Restaurant

Built in the 1870s the building was moved to this site in the 1880s. It was once the L. Seymour and Company Dry Goods store.





## **Glenn M.E. Church**

Built in 1899, the building was financed in part by a quilt fund in which the donor's name was embroidered on a memorial quilt for a fee. William Jennings Bryant paid five dollars for the privilege.



## **Blue Star Highway, Glenn** Glenn School

The school was built in 1880 by contractor W. S. Chase.



## **1630 Blue Star Highway, Glenn** Earl's Farm Market

Strawberries, raspberries and blueberries are grown at Earl's Farm Market, which offers a U-pick experience. The market also includes a bakery.

## GANGES TOWNSHIP



**Blue Star Highway, Ganges Township**  
Krupka's Blueberry Plantation #4



**Blue Star Highway, Ganges Township**  
Benjamin & Elvira Plummer Centennial Farm

Benjamin Plummer established the farm in 1848. At one time there was a small community here called Plummerville that included a sawmill, pier, tannery, and a store.



**Blue Star Highway and 122<sup>nd</sup> Street,  
Ganges Township**

The community of Ganges was originally called Johnson Corners and contained a blacksmith and general store. In 1916 Fred and William Haile built a garage with a community hall above. The Vedanta Society of Chicago established a monastery in Ganges at 6723 122<sup>nd</sup> in 1971.